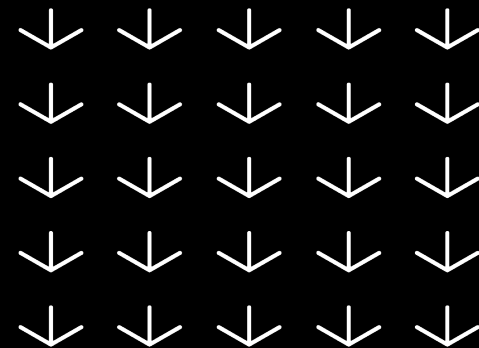




/// KUNDENTAG 2023

# ***AWC UI BUILDER***

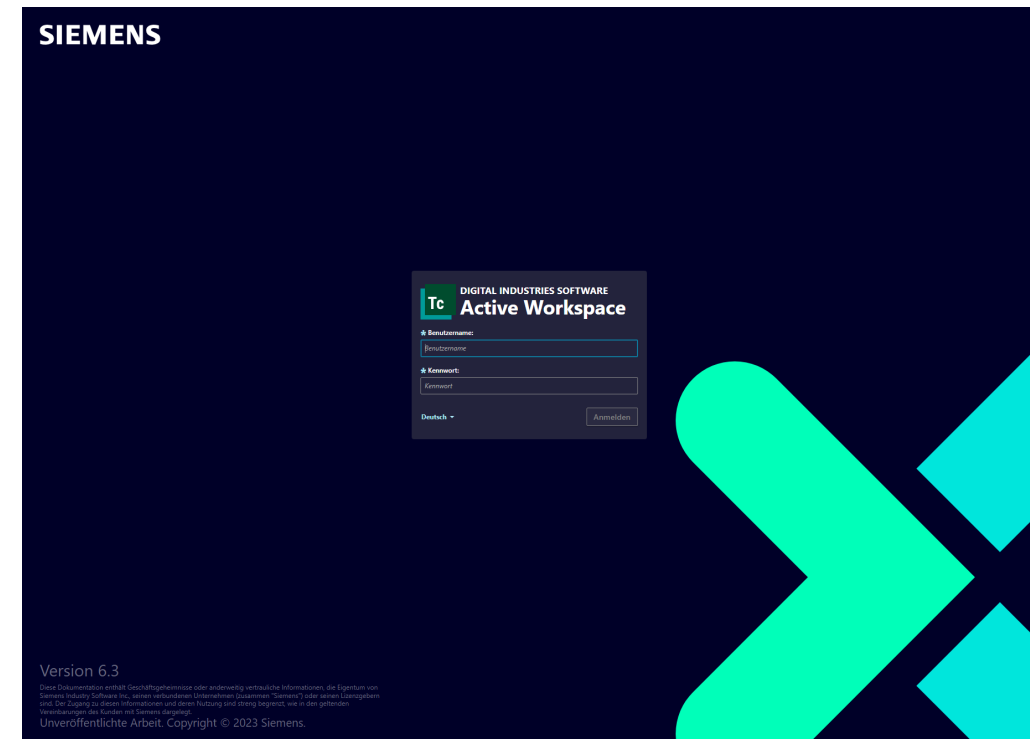
Fabian Wallner & Afolabi Esan, 21.06.2022, 14:00 – 14:45 Uhr



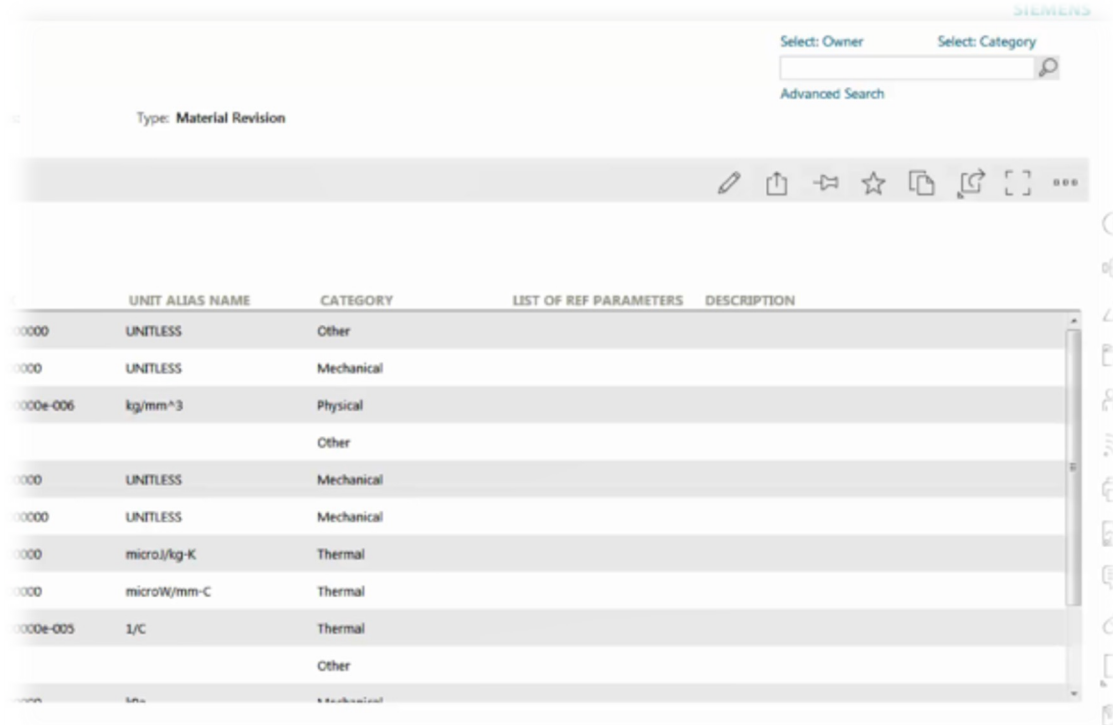
/// ÜBERSICHT

# INHALTE

1. Vorteile des UI Builders
2. Voraussetzungen für den UI Builder
3. Anwendungsbeispiele
4. Zusammenfassung



# VORTEILE DES UI BUILDERS



The screenshot shows a Siemens software interface for material revisions. At the top, there are search filters for 'Owner' and 'Category', and an 'Advanced Search' button. Below the filters, the text 'Type: Material Revision' is displayed. A toolbar with various icons (edit, copy, paste, star, etc.) is visible. The main content is a table with the following columns: UNIT ALIAS NAME, CATEGORY, LIST OF REF PARAMETERS, and DESCRIPTION. The table contains several rows of data, including units like 'UNTLES', 'kg/mm^3', and 'microJ/kg-K', and categories like 'Other', 'Mechanical', and 'Thermal'.

	UNIT ALIAS NAME	CATEGORY	LIST OF REF PARAMETERS	DESCRIPTION
0000	UNTLES	Other		
0000	UNTLES	Mechanical		
0000e-006	kg/mm^3	Physical		
		Other		
0000	UNTLES	Mechanical		
00000	UNTLES	Mechanical		
0000	microJ/kg-K	Thermal		
0000	microW/mm-C	Thermal		
0000e-005	1/C	Thermal		
		Other		

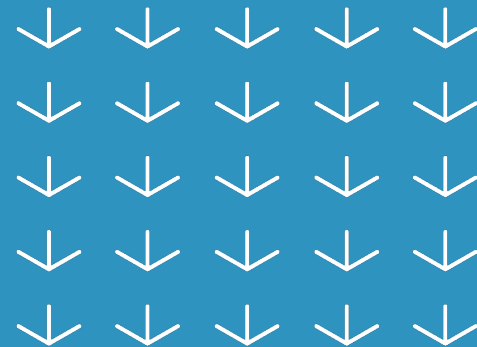


- Geschwindigkeit = Produktivität
- Usability = Akzeptanz
- Zeit = €€€

/// 1.

# ***VORAUSSETZUNGEN FÜR DEN UI BUILDER***

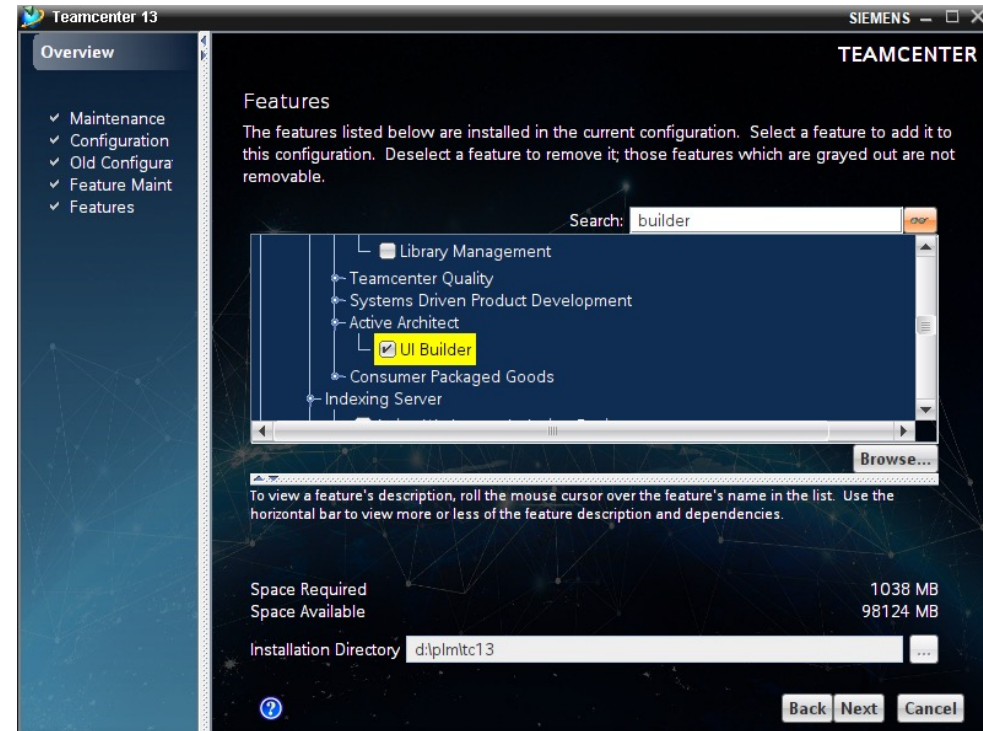
- Installation
- Active Architect?
- UI Builder im Active Architect
- Ausführung



# INSTALLATION

Active Architect kann entweder mit Deployment center oder mit Teamcenter environment manager (TEM) installiert werden

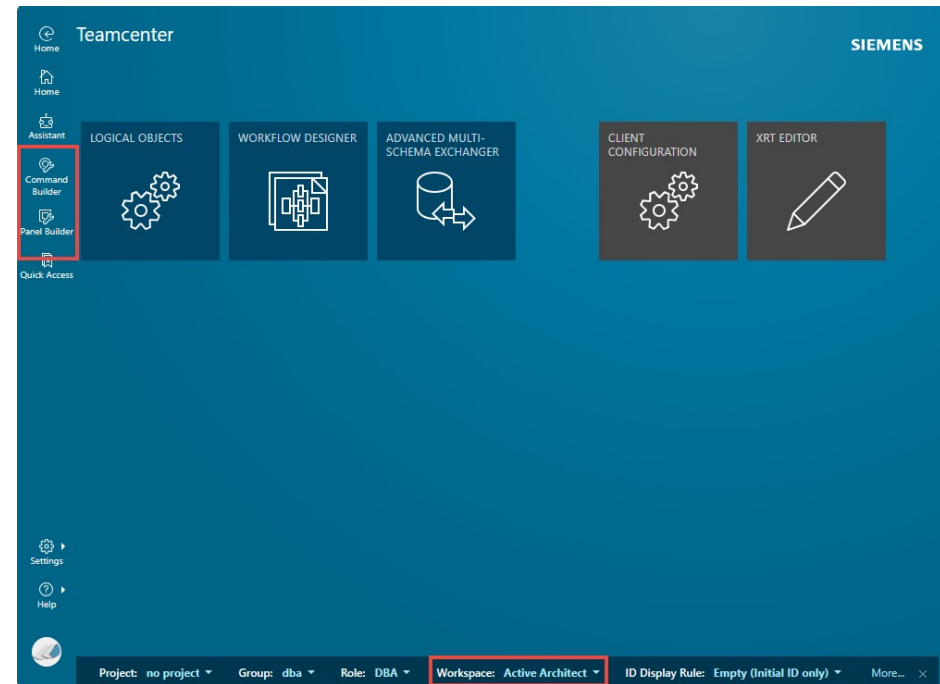
- Active Workspace Client
- Active Workspace Microservices
- Active Workspace Gateway
- Active Architect Core
- Active Architect → UI Builder



# ACTIVE ARCHITECT?

Ein Workspace als Sammlung von Seiten, die uns folgendes ermöglicht:

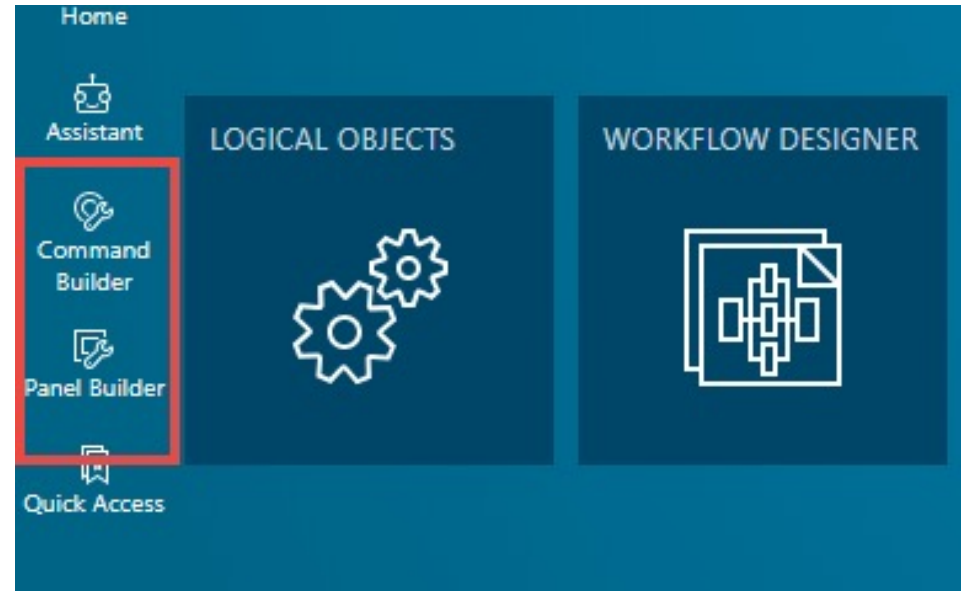
- Einfache Änderung vorhandener Command-Platzierung, -Sichtbarkeit, -Symbole usw.
- Logische Objekte
- Workflow Designer
- XRT Editor



# UI BUILDER IM ACTIVE ARCHITECT

Der Active Workspace UI Builder besteht aus mehreren Hauptspeicherorten, die die Benutzeroberfläche für die dynamische Konfiguration bereitstellen.

- **Command Builder:** Suchen, Ändern und Erstellen von Befehlen
- **Panel Builder:** Erstellen und Ändern von Fenstern
- **Action Builder:** Bestandteil für Command und Panel Builder



# AUSFÜHRUNG

1. Workspace: **Active Architect** wechseln.
2. Verbindung im „Development Mode“ erzeugen d.h. URL beinhaltet: ?dev oder devMode

Normale URL:

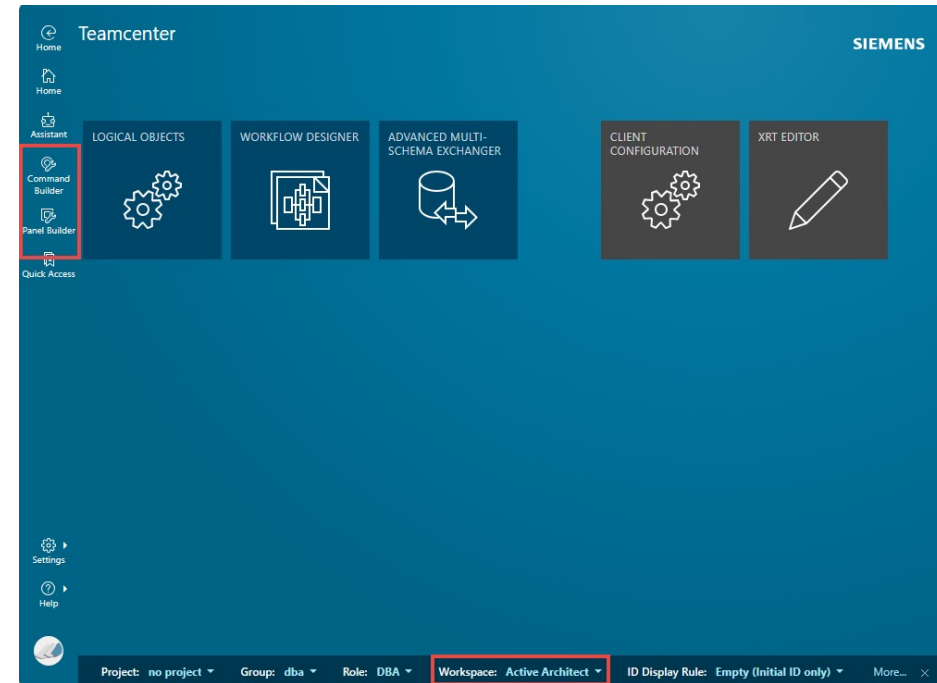
<http://columbia:3000/#/showHome>

**Development Mode URL:**

<http://columbia:3000/devMode/#/showHome>

**Bemerkung:**

Ab Active-Workspace@6.2.0 ist „/devMode/“ zu verwenden





/// 2.

# ***ANWENDUNGSBEISPIELE***

- Öffnen eines Objektes im Kontextmenü (RMT)
- Senden eines Objektes nach NX im Kontextmenü (RMT)

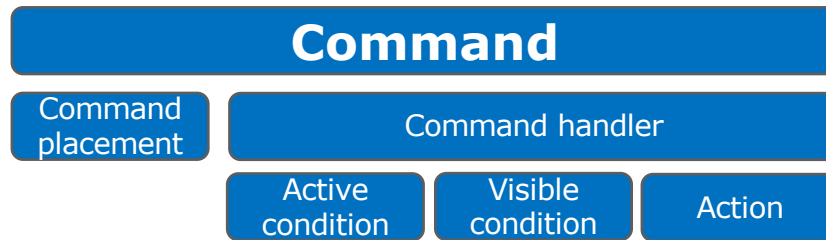


# DEEP DIVE UI BUILDER

## Änderungen exportieren:

Änderung aus dem Dev-Mode in dem erstellten Modul exportieren.

Im CommandsViewModel.json werden alle neue Commands, icons, Placements etc. definiert.



The screenshot shows a code editor on the left with a file tree and a code editor window. The code editor window displays a JSON object for a command:

```
1 {
2   "commands": {
3     "Awp0showobjectInContext": {
4       "iconId": "cmdOpen",
5       "title": "{{i18n.showObjectCommandTitle}}",
6       "description": "{{i18n.Awp0ShowObjectDesc}}",
7       "isToggle": false
8     },
9   },
10  "A"
11  "C:\ tc_tc Command Prompt
12  D:\plm\Tc13\aws2\stage> Npm run exportToSrc
13  > active-workspace@6.2.0 exportToSrc
14  > node build/js/exportToSrc.js
15
16  + Processing options...
17  + Querying deltas from http://localhost:3000/dars
18  + Loading modules in source...
19  + Query for deltas completed in 2 s
20  + Loaded modules in 4 s
21  Multiple modules available: Contextmenu_Module,2d-
22  sification,configurator,contentmgmt,csi,docmgmt,ga
23  rkup,massupdate,materialmgmt,nx,occmgmt,pmalawaut
24  tionshipbrowser,reports,resource manager,schedulema
25  ,tc-aw-solution,tcmeaw icons,tcoo,uibuilder,userma
26  select a module to modify: Contextmenu_Module
27  + Applying 52 deltas...
28  +++ Created commandsViewModel:commands.MY DRWE H
29  +++ Created commandsViewModel:commandHandlers.MY
```

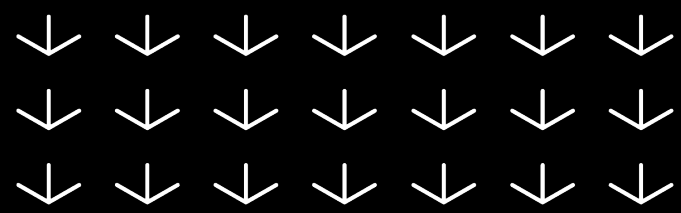
The terminal window shows the command prompt and the output of the exportToSrc command. The terminal output includes the command prompt, the command being run, and the output of the command. The terminal output shows the command being run, the output of the command, and the output of the command. The terminal output shows the command being run, the output of the command, and the output of the command.

# ZUSAMMENFASSUNG

- Geschwindigkeit = Produktivität
- Usability = Akzeptanz
- Zeit = €€€



- Bsp: OneClick Workflow
- Bsp: Rechte Maustaste
- Tiefes Verständnis von Vorteil



***VIELEN DANK***





**DR. WALLNER ENGINEERING**

