



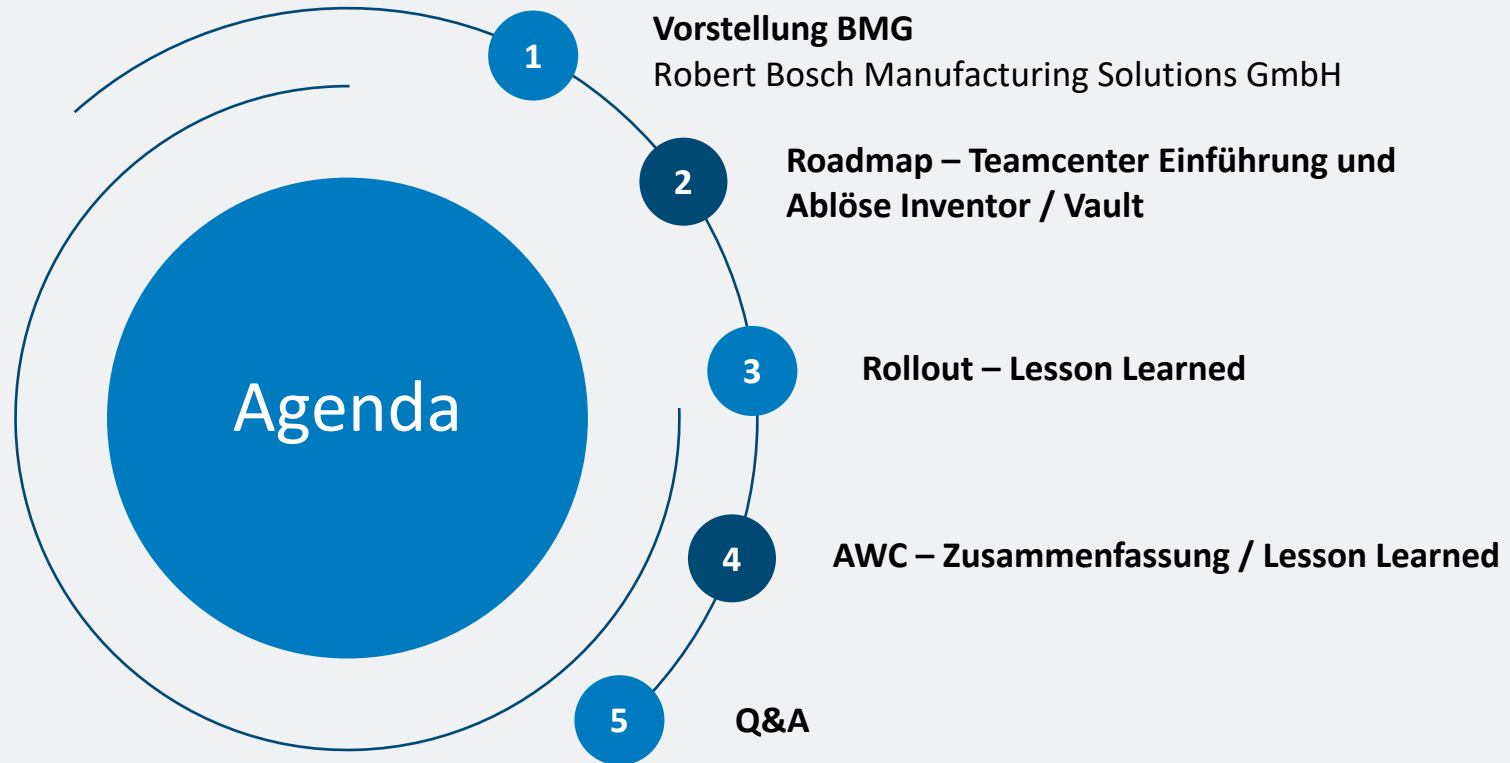
Einführung Active Workspace und Ablöse Inventor Vault

Thomas Helm BMG\ICO1

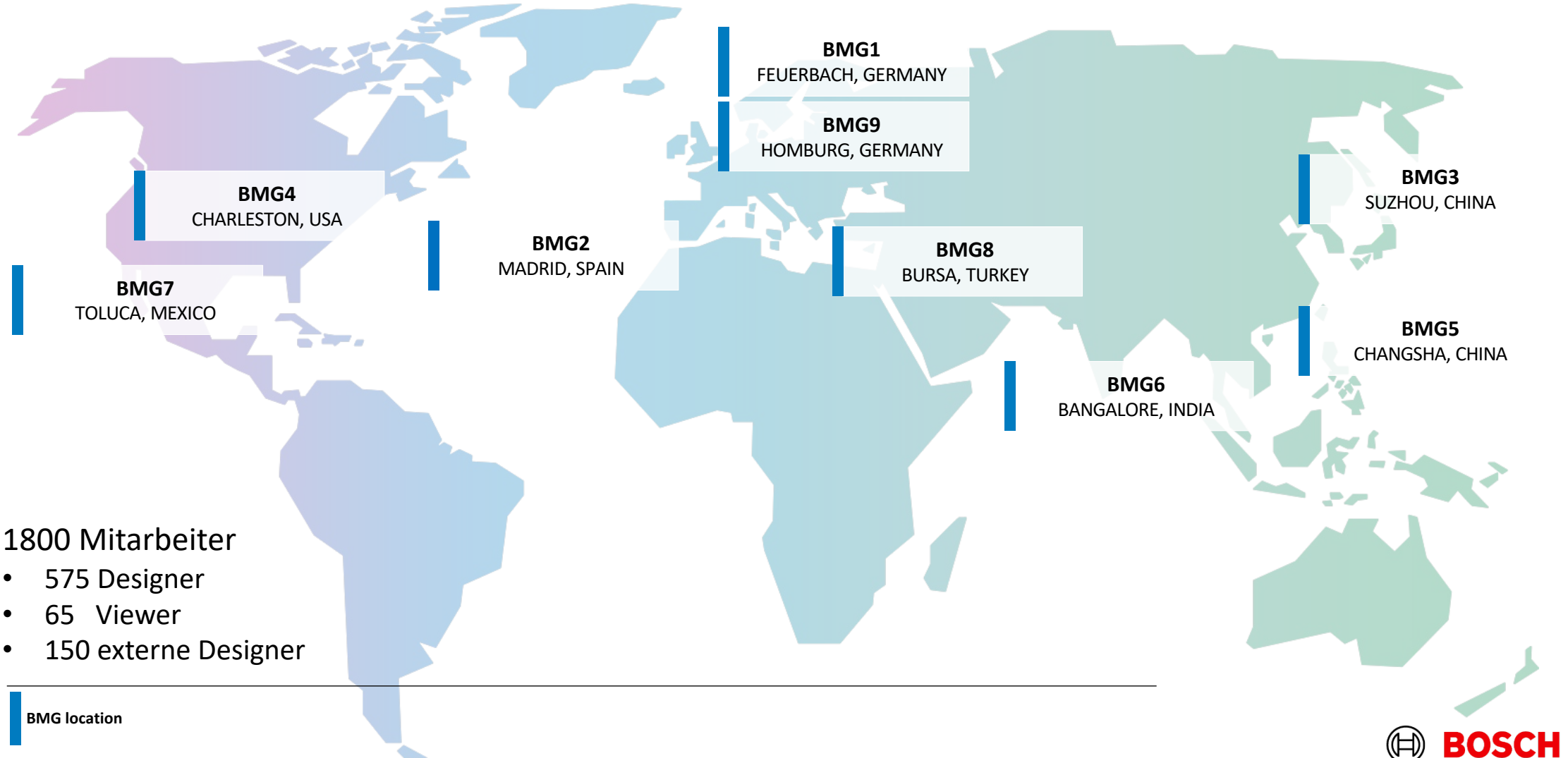
Product Owner PLM

Einführung Active Workspace und Ablöse Inventor Vault

Agenda

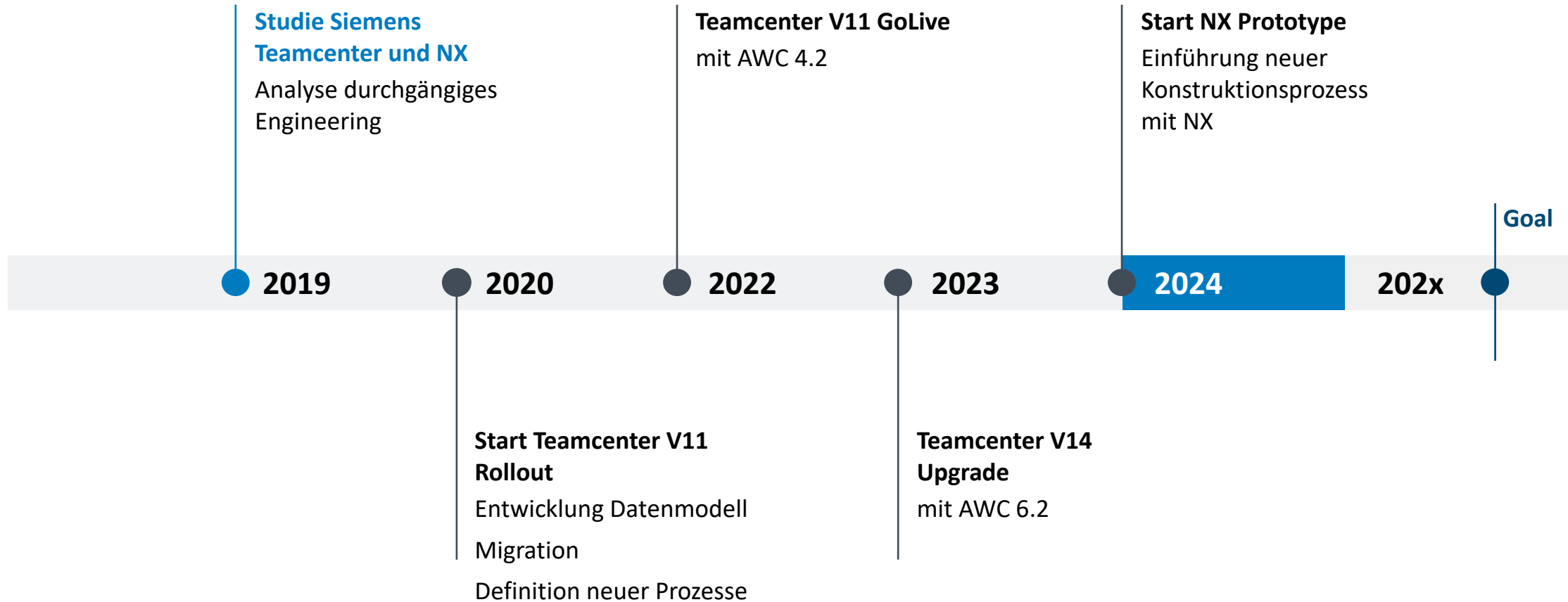


BMG | Standorte



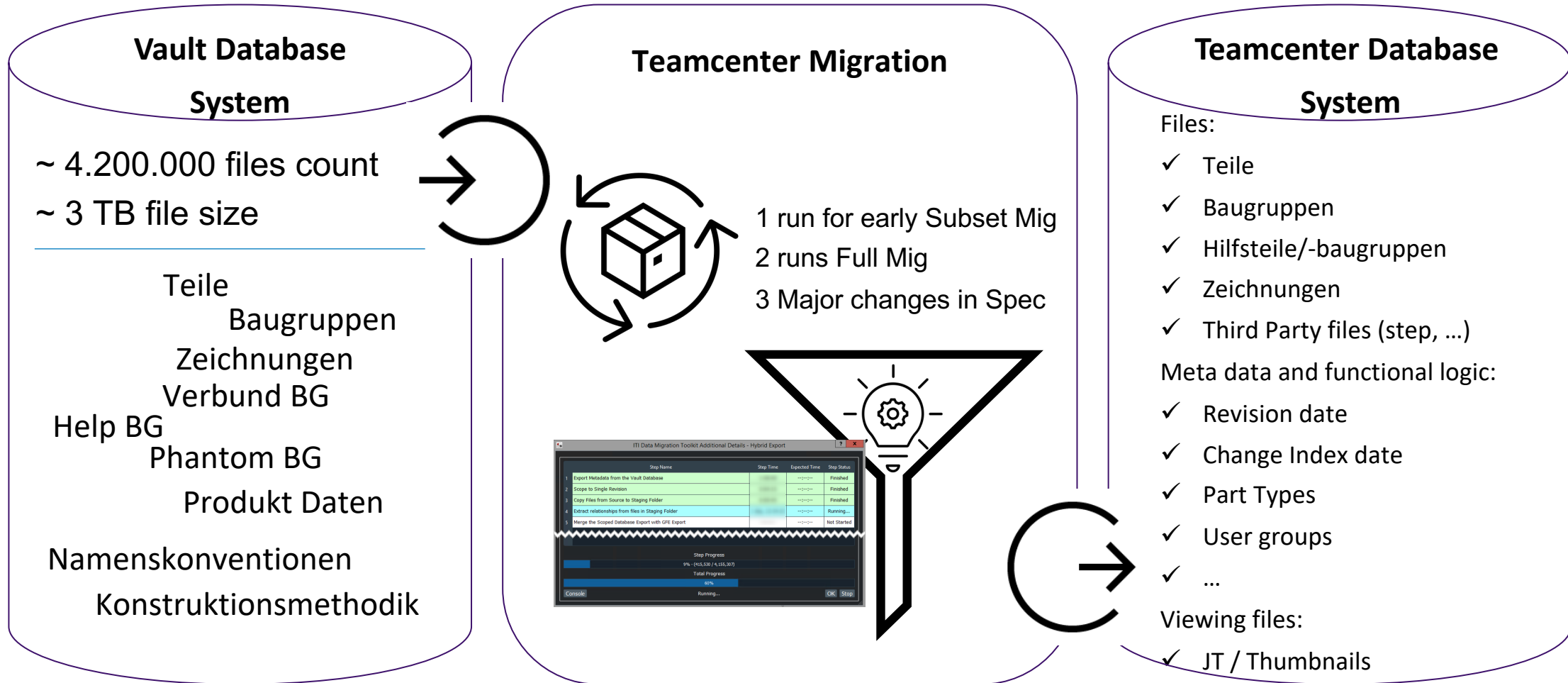
Einführung Active Workspace und Ablöse Inventor Vault

Roadmap – Teamcenter Einführung und Ablöse Inventor / Vault



Einführung Active Workspace und Ablöse Inventor Vault

Rollout – Lesson Learned



Einführung Active Workspace und Ablöse Inventor Vault

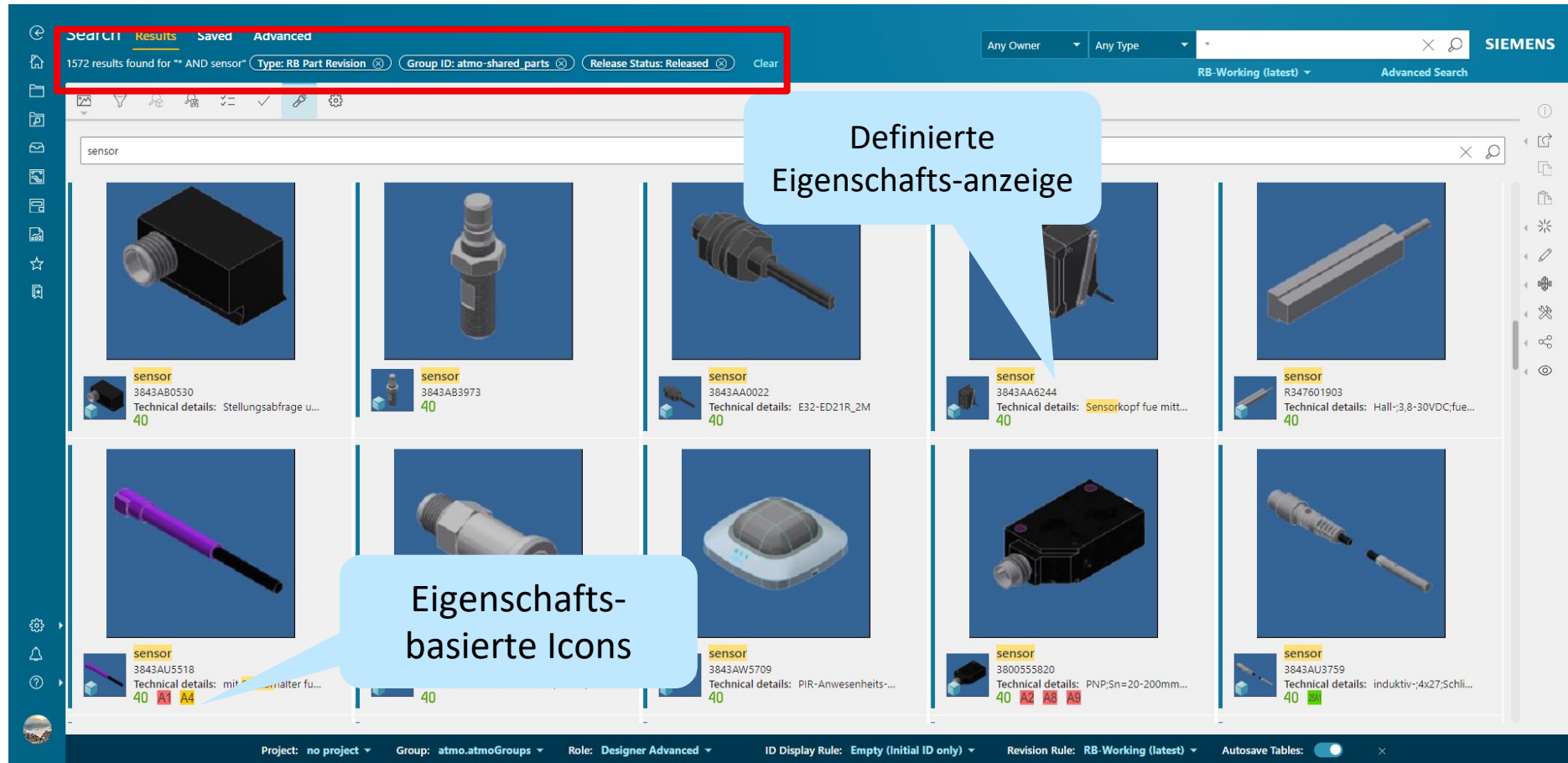
AWC – Zusammenfassung

The screenshot displays the Siemens Teamcenter Active Workspace (AWC) interface. The top navigation bar includes the 'Teamcenter' logo, a search bar with 'Any Owner' and 'Any Type' filters, and the 'SIEMENS' logo. The main workspace is divided into several sections:

- Left Sidebar:** Contains icons for navigation and a vertical list of icons on the far left.
- Top Left Grid:** Includes 'HELP' (with a question mark icon), 'FOLDERS' (with a folder icon), 'LIBRARY SEARCH' (with a magnifying glass icon), and 'STANDARD SEARCH' (with a magnifying glass icon). A callout bubble points to the 'HELP' icon with the text: "Link zu eigenen Hilfeseiten".
- Top Right Grid:** Includes 'ATMO PROJECTS', 'STANDARDS', and 'MY ACTIVE FOLDERS' (all with folder icons). A callout bubble points to the 'STANDARD SEARCH' icon with the text: "Vordefinierte Suchen".
- Bottom Left Grid:** Includes 'FAVORITES' (with a star icon), 'MY STUFF' (with a magnifying glass icon), and 'CREATE DOCUMENT' (with a document icon). A callout bubble points to the 'MY STUFF' icon with the text: "Eigene Kacheln zu Objekten erstellen".
- Right Panel:** Displays a grid of search results, each with a 3D model and a title. Titles include: "MA90000590/03 - PROCESS MODULE - ...", "AS90531678/05 - BASE FRAME - 0804JE6213", "LN90000434/00 - ---0 - 0843BE5591", "AS00031206/02 - CONTROL PANEL...", "AS00032756/01 - COOLANT SUPPLY +...", and "AS90472920/00 - BASE STATION - 0804FK5151".
- Bottom Bar:** Contains status information: "Project: no project", "Group: atmo.atmoGroups", "Role: Designer Advanced", "ID Display Rule: Empty (Initial ID only)", "Revision Rule: RB-Working (latest)", and "Autosave Tables: [toggle switch]".

Einführung Active Workspace und Ablöse Inventor Vault

AWC – Zusammenfassung



Einführung Active Workspace und Ablöse Inventor Vault

AWC – Zusammenfassung

The screenshot displays the Siemens Active Workspace (AWC) interface for a project named "coolant supply" under the "holding plate" revision. The top navigation bar includes tabs for Overview, Where Used, Content, Attachments, History, Workflow, Relations, SAP, and 3D. The main content area is divided into two panes. The left pane shows a BOM table with columns for Element, ID, Sequence, R..., Partnumber, and Technical details. The right pane shows the Properties and Preview sections. A callout box points to the "Item based Commands (e.g., SAP connection)" in the Properties section. Another callout box points to the "Role/Item based Quick Commands" in the Actions section, which includes buttons for ReleaseQuick, Revise, and StatusReset.

Element	ID	Sequence	R...	Partnumber	Technical details
coolant supply	AS00032756			3842666777	complet order
front panel	PT92083004	1	40	0804HR5941	
reinforcing gusset x2	PT00131038	2		1111JH2222	test
stator	PT00017149	3	40	0804J2548	
holding plate	PT92199516	4	40	0804HR5642	
safety clutch	PT91373759	101	40	3843AZ0427	SKH/10/F/XX - Freischaltend
metal bellow coupling	PT90051284	102	40	3843AZ6108	d=16,0/25,0;Mnenn=15Nm;
Torque Sensor x1	PT00009534	103	40	3843CA9392	+5Nm;DMS;20000U/min;+/
proximity switch	PT92166531	104	40	F03CF00009	induktiv;M12x1;L=65;Oeffner
socket head cap screw x4	PT90571012	200	46	2910141054	ISO4762-M3x12-8.8; Innense
socket head cap screw x4	PT90538671	201	40	2910141201	ISO4762-M6x20-8.8; Innense
socket head cap screw x10	PT91016792	202	40	2910141244	ISO4762-M8x25-8.8; Innense
socket head cap screw x6	PT90880224	203	40	2910141254	ISO4762-M8x50-8.8; Innense
socket head cap screw x3	PT91001889	204	40	2910141301	ISO4762-M10x50-8.8; Innens
straight pin x4	PT90539568	210	40	3800514018	DIN7979-D5m6x24-St; D=ge
straight pin x2	PT90749924	211	40	1840097627	DIN7979-D6m6x24-St; D=ge
servomotor x1	PT92349434	212	46	R911384535	MS2N04-DOBQN-CMSH0-NI

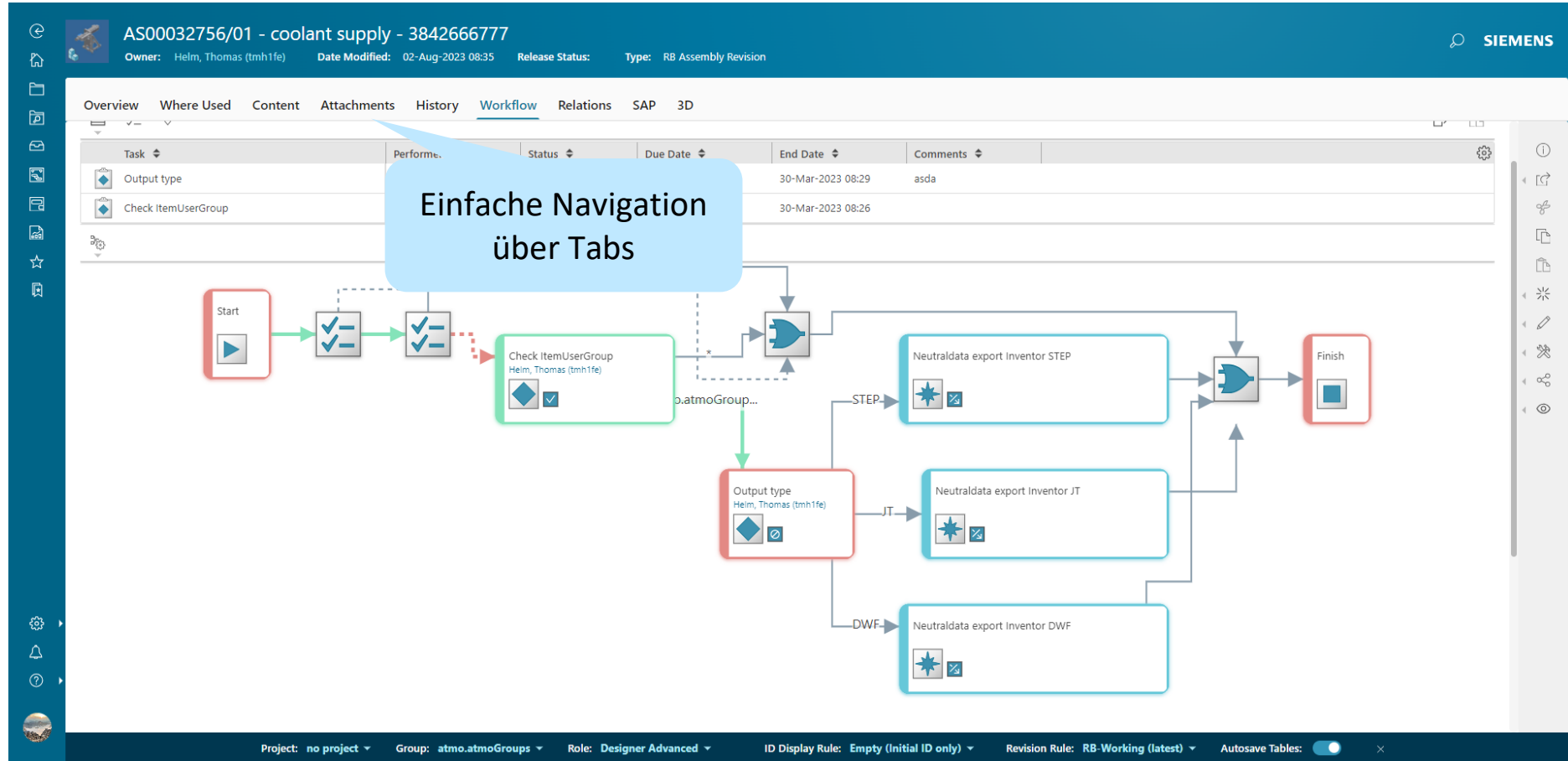
Item based Commands (z.B. SAP Anbindung)

ReleaseQuick
Revise
StatusReset

Role/Item based Quick Commands

Einführung Active Workspace und Ablöse Inventor Vault

AWC – Zusammenfassung



Einführung Active Workspace und Ablöse Inventor Vault

AWC – Zusammenfassung

DR90233429/02 - holding plate - 0804HR5642

Owner: Haas, Ralf (hsr2fe) Date Modified: 28-Jul-2022 13:12 Release Status: Released Type: RB Zeichnung Revision

Overview Where Used Attachments History Workflow Relations

▼ PROPERTIES

Name: holding plate
ID: DR90233429
Partname: holding plate
Revision: 02
Group ID: atmo.atmoGroups
Created by (ID): hsr2fe
Language:
Change reason:
Change reason (short):
Add. info:
Responsible Department: ATMO-1DE/SGP43
BWN: 106

3D Model: PT92199516/02 - holding plate - 0804HR5642

▼ LEGACY INFORMATION

Vault Folder Path: \$/Sites/ATMO1/project/M4601989/Station030

Integration von Links

▼ PREVIEW

DR90233429/02 PDF 28-Jul-2022 148 Kb

1 of 1 Automatic Zoom

Technical drawing showing dimensions and a table of material properties.

Project: no project Group: atmo.atmoGroups Role: Designer Advanced ID Display Rule: Empty (Initial ID only) Revision Rule: RB-Working (latest) Autosave Tables: ☒

Einführung Active Workspace und Ablöse Inventor Vault

AWC – Zusammenfassung / Userfeedback

Gleiches UI für CAD Integration

1

Externer Browser

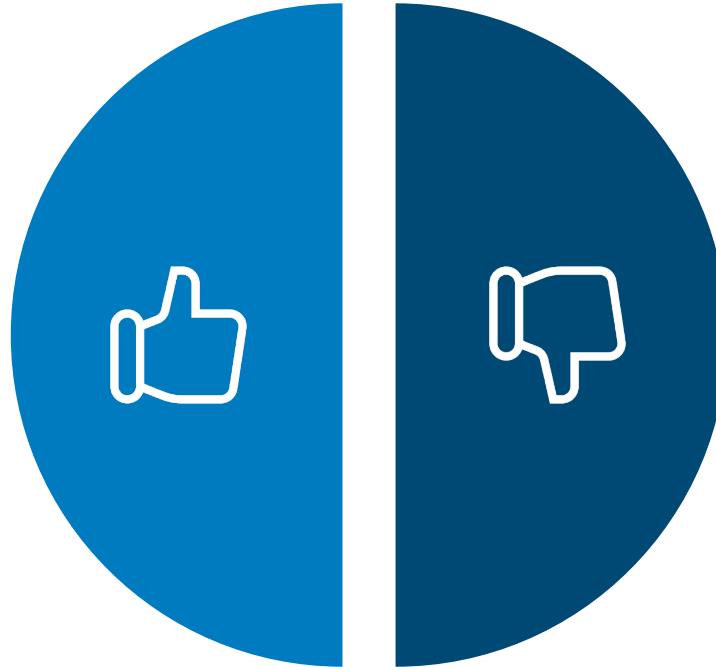
2

Schnell Nutzbar - keine lokale
Installation /Updates
notwendig

3

Dynamische Kommandos
basierend auf Regeln

4



1

Zusammenhänge
verschiedener Objekttypen
(Item/Item Revision/Dataset)

2

Global Search – Items mit
unterschiedlichen
Eigenschaften

3

Inventor Integrierter AWC
blockiert Design

4

Navigieren im integrierten
AWC

Einführung Active Workspace und Ablöse Inventor Vault

Technische Zusammenfassung

- Flexibilität in der UI
 - Stylesheets
 - Dynamische Compounds
 - An der Revision
 - An der Verbauung
 - „UI Builder“
 - Einfaches Customizing (Angular, React, SOA)
- Globale Suche
 - Auch verbundene Suchen möglich
- Arbeiten in mehreren parallelen Sessions möglich
- Nutzung als ThinClient (Shopfloor)

Einfach.
Schnell.
Flexibel.

Einführung Active Workspace und Ablöse Inventor Vault

Fragen / Diskussion

